

NORTH CAROLINA
CHOOSE & CUT



Memories



**Christmas Tree
Association**

YOUR GUIDE TO NORTH CAROLINA CHOOSE & CUT FARMS

CHRISTMAS 2025

www.NCchristmastrees.com

Sugar Plum Farm



*"Where the Perfect
North Carolina Fraser Fir
Christmas Trees are Grown"*

**OVER 10,000 TREES
TO CHOOSE FROM 3-12 FT.**
Unique Christmas Shoppe

828-765-0019

*Creating Memories
Since 1967!*

Visit with Santa • Free Refreshments
Free Covered Wagon Hay Rides

e-mail: sugarplumfarm@att.net • see a map to our farm at www.sugarplumfarms.net
1263 ISAACS BRANCH ROAD • NEWLAND, NC 28664

Snowy Mountain Christmas Tree Farm



Elevation 4,000 feet,
360-degree view,
60 acres of Fraser Fir, 2-20 feet.

Visit our new Christmas Shop, warm by a
large open fireplace with Christmas
snacks then tour our Choose & Cut Farm,
1 1/4 mile from the shop.



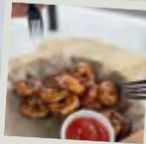
4699 Linville Falls Hwy (US Hwy 221) • Newland, NC • 828-733-9589 / 828-260-3133
Christmas Shop: 828-737-9313 • www.SnowyMountainChristmasTreeFarm.com



OLD BARN winery



tours and tastings



food



quality wines



trolley



pet and family friendly



HOME OF
Frosty's
Choose & Cut

WWW.OLDBARNWINERY.COM

Keep Your NORTH CAROLINA FRASER FIR

*The Perfect Christmas Tree
Fresh, Fragrant, & Safe*



Make a fresh cut

Straight across the base of the tree, cut off approximately one half inch before placing tree in stand.

Use a stand that will hold a gallon of water or more

Check water often, keep the stand full

A tree may take up a gallon of water in the first 24 hours and a quart a day after that. Preservatives are not needed, just plenty of fresh water.

Place tree away from heat sources, heating vents, fireplaces, wood stoves, radiators and sunny windows

Check lights and cords for broken bulbs and frayed wiring

Do not overload electric circuits

Turn off lights before leaving home or going to bed

Remove tree from your home promptly after Christmas and recycle it



Remember, a fresh cut, plenty of water, and a bit of common sense is all it takes to enjoy your North Carolina Fraser Fir. Have a Joyous Holiday Season.



Visit us on the web: www.ncchristmastrees.com

SCAN FOR MORE

From our fields to your family...



Mistletoe Meadows

CHRISTMAS TREE FARM



Bring this ad or a photo of this ad to our Choose & Cut location and get a **free door-size wreath with bow!**

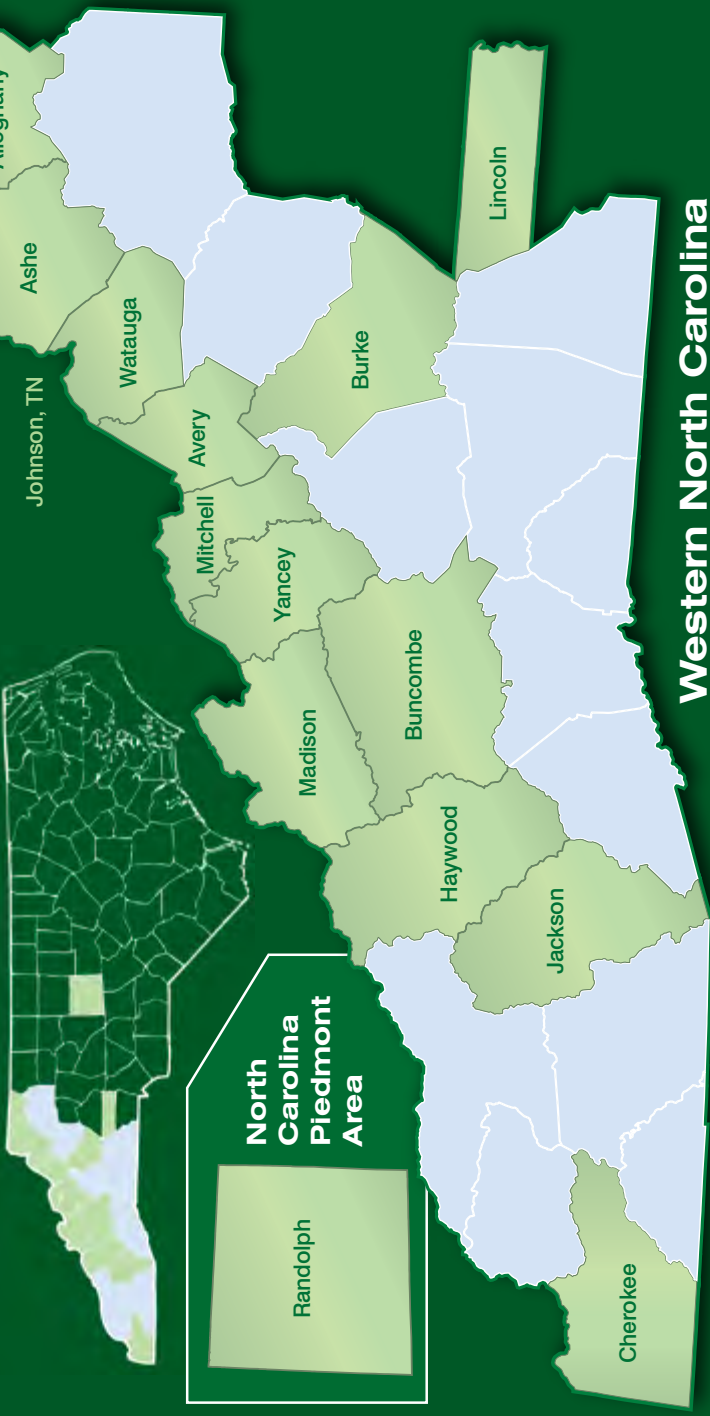
- ▶ Beautiful Fraser fir trees
- ▶ Handcrafted wreaths
- ▶ Cozy heated barn
- ▶ Complimentary cider, cocoa, and snacks
- ▶ Hayrides
- ▶ Family restrooms

Visit our website for details on our special November and December Choose & Cut Weekends

www.mistletoemeadows.com

270 Mistletoe Meadows Parkway
Laurel Springs, NC 28644 | (336) 465-9754

CHOOSE & CUT COUNTY MAP & DIRECTORY



ALLEGHANY LAUREL SPRINGS, SPARTA	6
Kathy Shore Nursery	6
Lil' Grandfather Mountain Christmas Tree Farm... 7	7
ASHE FLEETWOOD, GLENDALE SPRINGS, JEFFERSON, LAUREL SPRINGS, TODD, WEST JEFFERSON	9
C and J Christmas Trees, Todd.....	9
Clark's Evergreens	9
Cranberry Creek Tree Farm.....	10
Day's Choose & Cut Christmas Trees	10
Frosty's Choose and Cut.....	11
Lantern Farm	12
Mistletoe Meadows.....	13
Shady Rest Tree Farm.....	14
AVERY CROSSNORE, ELK PARK, NEWLAND	15
Cartner's Christmas Tree Farm	15
Christmas Corner Choose and Cut.....	16
JBN Choose and Cut.....	18
Red Barn Tree Farm	19
Reece Farm and Nursery	20
Snowy Mountain Christmas Tree Farm.....	20
Sugar Plum Farm	21
Two D's Nursery	22

BUNCOMBE LEICESTER

Sandy Hollar Farms.....	25
-------------------------	----

BURKE JONAS RIDGE

Jonas Ridge Tree Farm	26
-----------------------------	----

CHEROKEE TOPTON

Fir Heaven Sake Christmas Tree Farm	27
-------------------------------------------	----

HAYWOOD CANTON, WAYNESVILLE

Boyd Mountain Christmas Tree Farm.....	28
Dutch Cove Christmas Tree Farm	29
Mehaffey Tree Farm	29
Smoky Mountain Christmas Tree Farm.....	30

JACKSON GLENVILLE

Bear Valley Farm	31
Chimney Pond Farm	31
Pressley Tree Farm	33

LINCOLN VALE

Helms Christmas Tree Farm.....	34
--------------------------------	----

MADISON MARSHALL

Frosty Mountain Christmas Trees	36
---------------------------------------	----

MITCHELL BAKERSVILLE

Snow Creek Christmas Trees.....	37
---------------------------------	----

RANDOLPH SOPHIA

Spillman's Christmas Tree Farm	38
--------------------------------------	----

WATAUGA BLOWING ROCK, BOONE,
SUGAR GROVE

Appalachian Christmas Mountain Farms ... 39	39
Appalachian Evergreens.....	40
Bear Wallow Choose & Cut.....	41
C and J Christmas Trees, Boone	42
Circle C Tree Farms	43
Clawson's Choose & Cut.....	44
Good Shepherd Trees	45
Panoramic View Christmas Tree Farm	47

YANCEY BURNSVILLE

Yeater's Christmas Trees	48
--------------------------------	----

IN TENNESEE...

JOHNSON MOUNTAIN CITY

Wintergreen Farm	49
------------------------	----

NOTE: Please call ahead and/or check farm websites for the latest information regarding operations. Farm access, hours, tree sizes and services are subject to change and weather may be a factor.

ALLEGHANY COUNTY**KATHY SHORE NURSERY****KATHY SHORE**

1731 US Hwy 21S

Sparta, NC 28675

336-372-5324

Email: kathyshorenursery@skybest.comWebsite: KathyShoreNursery.com

Directions: From Winston-Salem: Take Hwy 21 North toward Boone for 32 miles. Take exit 265A onto I77 North. Take Elkin exit 83 onto US 21 North Bypass and stay on 21 for 26 miles. Kathy Shore Nursery will be on your right.

Operating Dates and Hours: By appointment only. Call for a time.

Tree Species and Height: Fraser Fir 5-13 feet, White Pine

Accessories and Special Services: Santa Claus, Refreshments, Restrooms, Tree Baling, Wreaths & Garland



Where Your Christmas Tradition Begins...

Trees, Wreaths & Garland

Hay Bale Movie Theater • Refreshments

FREE
Horse Rides
AND
Hay Rides



CHRISTMAS TREES
3-14 FEET



Lil' Grandfather Mountain
Christmas Tree Farm
Laurel Springs, NC



15371 NC Hwy 18 South
Laurel Springs, NC
www.lilgrand.com
336-372-9613

Visit www.NCchristmastrees.com

LIL' GRANDFATHER MOUNTAIN CHRISTMAS TREE FARM BUDDY & DELLA DEAL

15371 NC Hwy. 18 South
Laurel Springs, NC 28644
336-372-9613

Email: info@lilgrand.com

Website: LilGrand.com



Directions: From Winston-Salem: Take Hwy 421 North towards North Wilkesboro. Take Exit 282 onto NC Hwy 115. Turn right at the top of the exit ramp onto Hwy 115. Turn right onto Hwy 18 North at Wendy's. Travel 19 miles "up the mountain". Upon reaching the "top of the mountain", Lil' Grandfather is the first Christmas tree farm on the right. We are located one mile SOUTH of the Blue Ridge Parkway.

Operating Dates and Hours: Open November 27-30, December 6-7, December 13-14 TBD (Thanksgiving Day, Black Friday, Thanksgiving Weekend, the following weekend and maybe the second weekend in December). Thanksgiving Day, Friday & Saturday 9am-5:15pm and Sunday 12pm-5:15pm.

Tree Species and Height: Fraser Fir 4-11 feet; Other Species 4-9 feet: Blue Spruce, Canaan Fir, Concolor Fir, Exotic Firs & White Pine

Accessories and Special Services: Santa Claus, Hayrides, Live Animals, Refreshments, Restrooms, Tree Baling, Machine-Shaking, Balled & Burlapped Trees (limited), Wreaths, Garlands, Boughs

Other Services: Hay Bale Movie Theater, Heated Restrooms, Free Pony Rides, Local Crafts, Concession Stand, Friendly Pets on Leashes Welcome
See our ad on previous page.

Choose & Cut • Memories Photo Contest

**Win A Seven Foot
North Carolina Fraser Fir
For Christmas 2026!**

PRIZE AWARDED TO FIRST PLACE

**ONLINE
CONTEST
APPLICATION**



ENTRY FORM AVAILABLE ON PAGE 50

Or enter online at www.NCchristmastrees.com/photocontest

Visit www.NCchristmastrees.com

THINGS TO DO

HIGH COUNTRY LIGHTS

601 S. Main Street
Galax, VA 24333
336-756-7529
www.highcountrylights.com
See our ad below.



High Country Lights
Galax, Virginia

Open Thanksgiving - New Year's Day
www.highcountrylights.com

presented by **JOHNSON**
JF FAMILY




**START A
FAMILY
TRADITION**



ASHE COUNTY

C and J CHRISTMAS TREES, TODD* / THE BROWN FAMILY



1166 NC-194

Todd, NC 28684

828-264-6694

Email: dsbrown116@gmail.com

Website: CandJChristmasTrees.com

Directions: At the intersection of 194/221 in Ashe County-turn onto 194 and the farm will be .8 miles on your right. Or, take 194 for 17 miles from 421 in Boone. Farm will be on your left.

Operating Dates and Hours: Opening November 15: Saturdays & Sundays 9am-4pm, Thanksgiving Day 9am-1pm, and Black Friday 9am-4pm.

Tree Species and Height: Fraser Fir precut sizes: Tabletops-12 feet

Accessories and Special Services: Restrooms, Concessions for Sale

Other Services: Beautiful Views! Credit cards are accepted except for Amex. Pets are allowed on leashes. C and J hats, toboggans, t-shirts and sweatshirts for sale. We will also have a pumpkin stand & Christmas tree market located at 1011 Hwy 194N, Boone, 28607: Fridays 3-6pm, Saturdays 10-6pm and Sundays 2-6pm. Please see Facebook for Santa & Mrs. Claus, face painting and pop-up vendor schedules. Photographers please call or text 843-833-0156 to schedule a session.

Other Seasonal Services: Pumpkin Patch & Corn Mazes located at 3490 NC Highway 194 N, Boone, NC 28607. Pumpkin Patch open October 3rd. Corn Mazes open October 4th, Haunted Corn Maze open after dark on Fridays & Saturdays. Open Fridays 5pm-10pm, Saturdays 11am-10pm and Sundays 1pm-6pm. We have mums, pumpkins, food and drinks for sale and there will be inflatables castles, corn hole, and fire barrels after dark. Call or text 843-833-0156.

**See our other location on page 42.*

CLARK'S EVERGREENS & LANDSCAPING



2930 Liberty Grove Church Road

Fleetwood, NC 28626

336-877-7615

Email: clarksevergreens@yahoo.com

Directions: From Hwy 421, turn onto Hwy 221 towards West Jefferson. Go 2 miles, turn left onto Cane Run Springs Road. Continue for 2.3 miles and then turn right onto Liberty Grove Church Road. Pass the church on the right and we are the first place on the left after the church.

Operating Dates and Hours: CLOSED FOR 2025! Check back next year.

Visit www.NCchristmastrees.com

A S H E

CRANBERRY CREEK FARMS COUNCILL ROBBINS



CONTACT: DEBORAH ROBBINS

1777 N Burnt Hill Road

Laurel Springs, NC 28644

336-508-6653

Email: ccf_inc@yahoo.com

Website: facebook.com/CranberryCreek.Farms

Directions: Look for signs on Highway 88 near State Farm and signs on Highway 113 at Cranberry Creek Road.

Operating Dates and Hours: November 22-23, 28-30

Tree Species and Height: Fraser Fir to 13 feet

Accessories and Special Services: Christmas Shop, Hayrides, Refreshments, Restrooms, Tree Baling, Wreaths, Garland, Boughs

DAY'S CHOOSE & CUT CHRISTMAS TREES BRIAN DAY



398 Park Vista Rd

West Jefferson, NC 28694

336-452-4087

Email: newriver@skybest.com

Website: facebook.com/DaysChristmas1

Directions: From Park Vista Road, turn onto Kenneth Day Drive and park in lot.

Operating Dates and Hours: November 22-23, 27-30, 8am-5pm

Tree Species and Height: Fraser Fir 6-9 feet

Accessories and Special Services: Christmas Shop, Refreshments, Tree Baling, Wreaths, Garland



Mountain Aire Seafood & Steaks

9930 Hwy. 16 South

(Intersection of Hwy. 163 & 16)

West Jefferson, NC 28694 • 336-982-3060

www.MountainAireSeafood.com

Visit www.NCchristmastrees.com

FROSTY'S CHOOSE & CUT**ANDREW, MATTHEW & THOMAS SEXTON**

2152 Beaver Creek School Road

West Jefferson, NC 28694

800-238-TREE: Call for events schedule**Email: sextonfarms@skybest.com****Website: GoFrostys.com**

Directions: From I-40, take 421 N to Deep Gap, NC. Turn right onto 221. Travel approximately 15 miles to the first red light; turn left at the 163/194 intersection. Immediately turn left at the next red light onto Beaver Creek School Road in front of Ingles; continue 2.5 miles and Frosty's Choose & Cut will be on the right. Come enjoy the fun!

Operating Dates and Hours: Open Friday, Saturday, Sunday beginning November 21: Special hours Black Friday 9am-5pm, other Fridays 3pm-5pm, Saturdays 9am-5pm, Sundays 12pm-5pm, weekdays by appointment. Check closing date on website or call 800-238-TREE.

Tree Species and Height: Fraser Fir 6-12 feet

Accessories and Special Services: Santa Claus, Campfire, Restrooms, Tree Baling, Wreaths, Garland, Boughs, Mail Order, Tours by Appointment

Other Services: Build-a-Wreath Program, Personalized Decorative Items and Gifts, Bonfires, Personalized Keepsakes and Photos. Call 800-238-TREE for schedule of events or visit website at GoFrostys.com.

See our ad on back cover.



Auto • Home • Health • Life • Business

Protecting What Matters



lifestoreinsurance.com

336-246-7297

DID YOU KNOW...

North Carolina is the second-largest producer of farm-grown Christmas trees in the United States, producing over 22% of the nation's Real Christmas Trees.

A S H E

LANTERN FARM**ANDY & BEN CHEEK, CHAD BELTEAU**

221 Doe Meadows Drive

West Jefferson, NC 28694

828-278-4489 or 336-977-6866

Email: lanternfarmevents@gmail.comWebsite: LanternFarm.com

Directions: Farm is located at the intersection of the Blue Rige Parkway and Phillips Gap Road. There is access from Idlewild Road to Phillips Gap Road. Idlewild Road is accessible from Highway 221 or Highway 163.

Operating Dates and Hours: Open Friday, Saturday, Sunday from November 14 to December 7: 9am-5pm

Tree Species and Height: Fraser Fir Tabletop-8 feet (8-10 feet precut), Noble Fir Tabletops, Concolor Fir Tabletops

Accessories and Special Services: Christmas Shop, Hayrides, Refreshments, Restrooms, Tree Baling, Un-sheared Trees, Wreaths, Garland, Boughs, Mail Order, Tours by Appointment, Pre-tagging of trees available beginning September 20th.

Other Services: Farm offers fall event pumpkin picking, hayrides, and corn maze in mid-September through October 31. Killer views in clear weather, apple orchard in progress.

See our ad below.



**Fan Us
or follow us!**



Visit Our Website To Link To Us
www.NCchristmastrees.com

MISTLETOE MEADOWS / JOE FREEMAN

270 Mistletoe Meadows Parkway

Laurel Springs, NC 28644

336-465-9754

Email: mistletoem@skybest.comWebsite: MistletoeMeadows.com**Directions:** Go to MistletoeMeadows.com and click on Laurel Springs.**From Winston-Salem:** Take Hwy 421 N to Wilkesboro. Take Hwy 16 NTurn right on Hwy 88 East. Go 8 miles and turn left onto Mistletoe Meadows Parkway (gravel road with big sign). Follow road to the Choose and Cut barn and all the fun! **From Charlotte:** Take 1-77 N to exit 73B to Wilkesboro and follow directions above. **Operating Dates and Hours:** November 21-23, 26, 28-30, December 6-7 and December 13-14 (Closed Thanksgiving Day): 9am-dusk. Other days by appointment**Tree Species and Height:** Fraser Fir 2-13 feet, Blue Spruce 4-10 feet*, Leyland Cypress 3-7 feet*, Norway Spruce 3-20 feet*, White Pine 5-10 feet* (**balled & burlapped available*)**Accessories and Special Services:** Santa Claus, Hayrides, Refreshments, Restrooms, Tree Baling, Un-sheared Trees, Machine-Shaking, Wreaths, Garland, Boughs, Balled & Burlapped**Other:** Cozy Heated Barn with Family Restrooms, Free Wreath with Purchase of a Tree, Wreath Making Demonstrations; memories and traditions waiting to be made! Call ahead if you need a special appointment time and for the most up-to-date information, check out our website and Facebook page.

See our ad on page 3.



The Hometown Bank
For Your Mountain Home

Life Store
BANK

Member FDIC 1-800-723-4718 www.golifestore.com

DID YOU KNOW...

Christmas trees are an agricultural crop. For every real Christmas tree harvested, one to three seedlings are planted in its place.

A S H E

SHADY REST TREE FARM**TIM MILLER**

287 Trading Post Road
 Glendale Springs, NC 28629
 336-977-1659

Email: srtreefarm@skybest.com

Website: ShadyRestTreeFarm.com

Directions: From North Wilkesboro, take Highway 16 North to the Blue Ridge Parkway. Turn right onto the Blue Ridge Parkway, travel north 2.4 miles and then turn left at Northwest Trading Post onto Trading Post Road. Take the first driveway on the right.

Operating Dates and Hours: Open November 22 through December 24: every day, 9am-5pm, weather permitting

Tree Species and Height: Fraser Fir, Blue Spruce, Canaan Fir, Concolor Fir, Nordmann Fir, Turkish Fir, White Pine: 4-20 feet

Accessories and Special Services: Refreshments, Live Animals, Restrooms, Tree Baling, Unsheared Trees, Wreaths, Garland, Mail Order, Pre-tagging available starting October 1

Other Services: Blue Spruce and Norway Spruce available in nursery pots.

**ASHE THINGS TO DO****LIFESTORE BANK & INSURANCE**

PO Box 26
 West Jefferson, NC 28694
 336-246-4344
www.golifestore.com
 See our ads on pages 11 & 13.

THIRD DAY MARKET

599 NC Hwy 16S
 Jefferson, NC 28640
 336-846-1089
www.thirddaymarket.com
 See our ad on inside back cover.

OLD BARN WINERY

2152 Beaver Creek School Rd
 West Jefferson, NC 28694
 336-846-6060
www.oldbarnwinery.com
 See our ad on page 1.

ASHE PLACES TO EAT**MOUNTAIN AIRE
SEAFOOD & STEAKS**

9930 Hwy 16 S
 West Jefferson, NC 28694
www.mountainaireseafood.com
 336-982-3060
 See our ad on page 10.



Visit www.NCchristmastrees.com

AVERY COUNTY

CARTNER'S BLUE RIDGE FRASER FIRS OF NORTH CAROLINA

DAVID, JIM and SAM CARTNER

901 Balsam Drive
Newland, NC 28657
828-387-0681

Fax: 828-259-9465

Email: orders@carolinafraserfir.com

Website: CarolinaFraserFir.com



Directions: From Marion: Take 221N to Crossnore Drugstore (on right). Turn left onto 194 N. Go 4 miles to Newland and continue 2 miles straight to the farm on the left. **From Morganton:** Take 181N to Newland. Turn right at the first stop light, 194 North. Go 2 miles, farm is on left. **From Boone:** Take 105S to Linville stop light, turn right onto 181N to Newland. At the first stop light turn right on 194 N, go 2 miles - farm is on left. **From 19E:** Stay on 194 S, continue to go past Mountain Glen Golf Course entrance and turn at the next road to the right.

Operating Dates and Hours: November 22-23, 27-30, December 6-7: 9am-5pm

Tree Species and Height: Fraser Fir Tabletops-15 feet

Accessories and Special Services: Santa Claus, Refreshments, Restrooms, Tree Baling, Wreaths, Garland, Boughs

See our ad on page 16.

North Carolina Fraser Fir

▲ *The Perfect Christmas Tree for your Family Tradition*

- ▲ Grown in its native home of the NC mountains
- ▲ Soft, pleasant-to-touch, dark green needles
- ▲ Long-lasting, pleasant aroma
- ▲ Incomparable needle retention
- ▲ Strong yet pliable branches that hold even the heaviest ornaments



A V E R Y

CHRISTMAS CORNER CHOOSE AND CUT DEE CLARK



2870 Linville Falls Highway
Newland, NC 28657
828-733-4850

Email: christmascornercc@gmail.com

Directions: Use street address 2870 Linville Falls Highway, Newland. We are located at the intersection of NC 181 & 221, in Pineola.

Operating Dates and Hours: November 15 (special preview day event), then Official Opening November 22: 8:30am-5pm, every day or until sold out!

Tree Species and Height: Fraser Fir Tabletops-12 feet, Canaan Fir 6-8.5 feet, Norway Spruce 3-6 feet*, White Pine 4-6 feet* (*balled & burlapped available)

Accessories and Special Services: Refreshments, Wreaths, Boughs, Tree Baling, Machine Shaking

Other Services: Easy access and large parking area. We currently do not accept credit cards. We have several restaurants and a motel within 1.5 miles of our farm.

Cartner's

Blue Ridge

Fraser Firs
of North Carolina

CHOOSE 'N CUT
SINCE 1959

Fraser Fir Christmas Trees
Santa Claus • Refreshments
Fresh Wreaths, Garland & Boughs

901 Balsam Drive
Newland, NC 28657
(828) 387-0834
Fax: (828) 259-9465



www.CarolinaFraserFir.com
Email: orders@carolinafraserfir.com

HAVE A REAL TREE MERRY CHRISTMAS!

Visit www.NCchristmastrees.com



AVERY NC
visit.averycountync.gov

**Celebrate The Season And Find
The Perfect Christmas Tree**



A V E R Y

JBN CHOOSE & CUT / DANIEL JOHNSON

894 Walt Clark Road

Newland, NC 28657

828-773-2273 or 828-733-9520

Email: danielwj@hotmail.comWebsite: JohnsonBrothersNursery.com

Directions: From Newland: Take 194 (Miller's Gap Highway) 2.3 miles to 221 and turn right. In .9 miles, turn right onto East Crossnore Drive. Take a slight right onto Walt Clark Road, follow for .5 miles and turn left. Farm is on the right. **From Crossnore:** Turn left onto East Crossnore Drive and follow directions above.

Operating Dates and Hours: Open November 12-December 14: 9am-5pm, every day or until sold out!

Tree Species and Height: Fraser Fir Tabletops-12 feet

Accessories and Special Services: Tree Baling, Wreaths and Boughs

**THE LODGE**

AT BANNER ELK

Escape to the heart of the High Country- where mountain charm meets modern comfort.



lodgeatbannereik.com
828-898-4571

AVERY COUNTY'S LONGEST RUNNING REAL ESTATE FIRM



Linville Location:
828-733-5770

Newland Location:
828-733-2151

DID YOU KNOW...

At least 20 square feet of green space is available to wildlife for each Christmas tree grown.

RED BARN TREE FARM / NICK BOONE

9557 Linville Falls Highway

Newland, NC 28657

828-765-1400

Email: jessica@linvillefallswinery.com

Website: LinvilleFallsWinery.com/red-barn-tree-farm

Directions: Beside Linville Falls Winery on Highway 221 South. Take exit 317 on the Blue Ridge Parkway.

Operating Dates and Hours: Opening the Friday before Thanksgiving: November 21st. Check our website for the most current operating dates and times.

Tree Species and Height: Fraser Fir 5-11 feet

Accessories and Special Services: Christmas Shop, Hayrides, Refreshments, Restrooms, Tree Baling, Wreaths and Garland



110 Pineola Street • Newland, NC 28657 • 828-742-1900

DID YOU KNOW...

Christmas trees produce zero waste. They are a completely recyclable, renewable product.

A V E R Y

REECE FARM & NURSERY / ROBERT REECE

241 John Jones Road

Elk Park, NC 28622

828-898-5642

Email: rbreece@skybest.com

Directions: From Elk Park or Banner Elk: Take Banner Elk Highway/ NC-194 to Sam Eller Road/State Road 1310. Follow signs.

Operating Dates and Hours: Thanksgiving Weekend November 27-30:
Thursday-Saturday 10am-5pm, Sunday: 1pm-5pm

Tree Species and Height: Fraser Fir 2-14 feet

Accessories and Special Services: Restrooms, Tree Baling, Wreaths, Tours by Appointment, Pre-Tagging of Trees starting October 1

**SNOWY MOUNTAIN CHRISTMAS TREE FARM
CLAY CUTHBERTSON**

Choose and Cut Headquarters:

Snowy Mountain Christmas Shop & Sweets

4699 Linville Falls Hwy (221 S)

Newland, NC 29657

Mailing Address: PO Box 81

Crossnore, NC 28616

828-737-9313

Email: snowymtn@yahoo.com

Website: SnowyMountainChristmasTreeFarm.com or

SnowyMountainChristmasShopandSweets.com

Directions: Check in at Christmas Shop to pick up tree voucher and get directions to farm. For hours and closings: 828-737-9313.

Operating Dates and Hours: Christmas Shop open May-December 24:

Monday-Saturday 10am-6pm. Beginning Thanksgiving Weekend we are open Monday-Saturday 9am-7pm and Sunday 1pm-6pm.

Tree Species and Height: Fraser Fir 5-12 feet

Accessories and Special Services: Christmas Shop, Santa Claus, Restrooms at the Christmas Shop, Wreaths, Garland, Boughs, Tree Baling, Pre-Tagging of Trees, and Year Round Tours by Appointment (Call 828-733-9589)

See our ad on inside front cover.

DID YOU KNOW...

Farms that grow Christmas trees stabilize soil, protect water supplies and provide refuge for wildlife, all while creating scenic green belts.

SUGAR PLUM FARMS / DARRELL & SHARON PITTS

1263 Isaacs Branch Road

Newland, NC 28657

1 1/2 miles NW of Plumtree, NC 28644

828-765-0019

Email: sugarplumfarm@att.netWebsite: SugarPlumFarms.net

Directions: **From Charlotte:** I-77 North to I-40, go west to Marion, then take 226 North, follow signs. **From Asheville:** I-40 East to Marion, take 226 North, follow signs. **From Boone:** Hwy 105 to 221 to 194, follow signs. **From Johnson City:** Take 19E highway, follow signs. **From Shelby or SC:** Hwy 226 to Marion, follow signs. **DO NOT use GPS for directions.**

Operating Dates and Hours: Open November 15-December 14: Weekends 9am-Dark; Weekdays 12pm-4pm

Tree Species and Height: Fraser Fir Tabletops to 12 feet

Accessories and Special Services: Christmas Shop, Santa Claus, Hayrides, Marshmallow Roast/Campfire, Refreshments, Heated Restrooms, Tree Baling, Machine-Shaking, Wreaths, Garland, Boughs

Other Services: Music some weekends, call for dates & times or check our website.

See our ad on inside front cover.

**Mountain Glen Golf Club**PUBLIC GOLF COURSE
NEWLAND, NC

Voted Avery County's favorite
golf course 6 years in a row

Visit us online to book tee times, view upcoming events, and
for membership info: www.MountainGlenGolfClub.com

1 Clubhouse Drive, Newland, NC 28657

Golf Shop: 828-733-5804 | Main Office: 828-733-5809

**QUIK SHOP
NEWLAND****MARATHON GAS
CONVENIENCE STORE**

713 Pineola Street
Newland, NC 28657
828-733-0294



A V E R Y

TWO D's NURSERY**JOHN DELLINGER**

7849 Linville Falls Hwy

Newland, NC 28657

Mailing Address: PO Box 217

Crossnore, NC 28616

828-733-6686 or 828-898-2668

Email: johnd@twodsnursery.com

Website: TwoDsNursery.com

Directions: Four miles south of Crossnore, NC on Linville Falls Hwy (221) on the left. Thirty miles north of Marion, NC on Linville Falls Hwy (221) on the right.

Operating Dates and Hours: Open Thanksgiving day through the Christmas Season: 8am-5:30pm, daily!

Tree Species and Height: Fraser Fir 5-9 feet*, Canaan Fir 5-9 feet, Turkish Fir 5-9 feet*, White Pine 5-9 feet (*balled & burlapped available)

Accessories and Special Services: Restrooms, Tree Baling, Wreaths & Garland

Other Services: Precut trees available. Easy access and walking. See the giant inflatable Santa Claus!

NEWLAND CHRISTMAS TREE FESTIVAL

NOVEMBER 21-22 - 2025



Food & Drink - Live Music - Entertainment - Crafts

AVERY COUNTY - THE FRASER FIR CAPITAL OF THE WORLD

www.NewlandChristmasTreeFestival.com | 828-413-2482

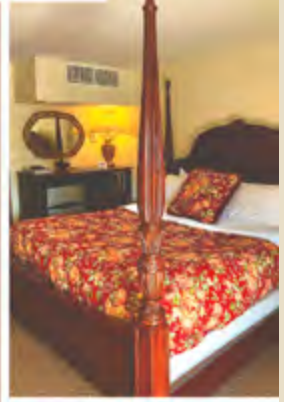


Get outside.
Get *Inspired.*

GRANDFATHER MOUNTAIN®

grandfather.com

THE INN
— AT SHADY LAWN —



Recently voted
BEST OF THE BEST
Bed & Breakfast in Avery County!

www.theinnatshadylawn.com (828) 742-1763 info@theinnatshadylawn.com

DID YOU KNOW...

North Carolina Christmas tree growers harvest over 3.2 million Christmas trees annually. These Christmas trees are grown on American soil by American farmers.

Visit www.NCchristmastrees.com



Mon-Fri 10:30-9pm

Sat 10:30-8pm

Sun 11-5pm

(828) 737-0700

**500 Pineola Street
Newland, NC 28657**

AVERY PLACES TO STAY

THE INN AT SHADY LAWN

330 Cranberry Street
Newland, NC 28657
theinnatshadylawn.com
828-742-1763
See our ad on page 20.

THE LODGE AT BANNER ELK

1615 Tynecastle Highway
Banner Elk, NC 28604
828-898-4571
www.lodgeatbannerelk.com
See our ad on page 18.

AVERY PLACES TO EAT

CAROLINA BARBEQUE

500 Pineola Street
Newland, NC 28657
www.carolinabbqnewland.com
828-737-0700
See our ad above.

PUERTO NUEVO TAQUERIA

110 Pineola Street
Newland, NC 28657
puertonuevobe.com
828-742-1900
See our ad on page 19.

AVERY THINGS TO DO

GRANDFATHER MOUNTAIN

2050 Blowing Rock Highway
Linville, NC 28646
800-468-7325 or 828-733-2013
www.grandfather.com
See our ad on page 20.

LACEY REALTY COMPANY

4205 Mitchell Avenue
Linville, NC 28646
828-733-2151 or 828-733-5770
www.laceyrealtync.com
See our ad on page 12.

MOUNTAIN GLEN GOLF CLUB

1 Clubhouse Drive
Newland, NC 28657
boone-ashville-nc-mountain-golf.com
828-733-5804 Pro Shop
828-733-5809 Office
See our ad on page 18.

QUICK SHOP

713 Pineola Street
Newland, NC 28657
828-733-0294
See our ad on page 12.

THE COUNTY OF AVERY NC

visit.averycountync.gov
See our ad on page 17.

BUNCOMBE COUNTY**SANDY HOLLAR FARMS
CURTIS, JUNE AND DALE HAWKINS**

63 Sandy Hollar Lane

Leicester, NC 28748

Home: 828-683-3645

Curtis Cell: 828-230-8118

Dale Cell: 828-712-3645

Email: sandyholfm@aol.comWebsite: SandyHollarFarms.com

Directions: From Asheville: Take NC 63 (Leicester Hwy) 11 miles. Turn left on North Turkey Creek Road. Go 1.5 miles and bear right on Earlys Mountain Road. Go 6 miles and the farm is on the left.

Operating Dates and Hours: Open November 22-23, 27-30, December 6-7, 13-14: 9am-4pm

Tree Species and Height: Fraser Fir, Canaan Fir, Turkish Fir: Tabletops-9 feet

Accessories and Special Services: Christmas Shop, Hayrides, Restrooms, Tree Baling, Wreaths & Garland

Other Services: Hayrides on weekends only. We also have a vacation rental near the property.



Choose & Cut •
Memories
Photo
Contest

**Win A Seven Foot
 North Carolina
 Fraser Fir
 For Christmas 2026!**



**ONLINE CONTEST
 APPLICATION**

ENTRY FORM AVAILABLE ON PAGE 50

Or enter online at www.NCchristmastrees.com/photocontest

BURKE COUNTY

JONAS RIDGE TREE FARM / JAMIE SHELL

Farm Address:

8040 Joe Poore Road
Jonas Ridge, NC 28641

Mailing Address:

7439 Dogwood Knob Road
Newland, NC 28657

828-733-4654 or 828-387-7588

Email: shelltrees-jr@yahoo.com

Website: JonasRidgeTreeFarm.com

Directions: From Morganton: Take I-40 to Exit 105 Hwy 18 North, then travel Hwy 181 North for about 22 miles, then turn right on Joe Poore Road. Farm is 1 mile on right. Look for signs!

Operating Dates and Hours: Open Saturday & Sunday the weekend before Thanksgiving and then Wednesday-Sunday 9am-4:30pm until sold out

Tree Species and Height: Fraser Fir 2-12 feet, White Pine: 4-8 feet

Accessories and Special Services: Live Animals, Refreshments, Restrooms, Tree Baling, Wreaths, Garland, Boughs, Pre-tagging of trees in October, check website for dates

Other Services: Easy walking terrain and beautiful views! Check our website for availability and adjusted hours!



CHEROKEE COUNTY**“FIR” HEAVEN SAKE CHRISTMAS TREE FARM
RICKEY POSTELL**

40 Fir Heaven Sake Lane

PO Box 87

Topton, NC 28781

828-361-4350

Email: ricktrees@yahoo.comWebsite: FirHeavenSakeChristmasTreeFarm.com

Directions: **From Bryson City:** Take US-74 West for 24.4 miles, turn right onto Nelson Road, go .3 miles, follow signs. **From Robbinsville:** Take US 129 South, go 11.3 miles, turn right onto US-19/US-74/US-129. Turn right onto Nelson Road, go .3 miles, follow signs. **From Andrews:** Take US-19 North/ US 74 East/US-129 North, go 5.3 miles, then turn left onto Nelson Road, go .3 miles, follow signs. Map available on website.

Operating Dates and Hours: Opening November 28: Fridays and Saturdays 9am-5pm, Sundays 1-5pm and Monday through Thursday by appointment.

Tree Species and Height: Fraser Fir up to 10 feet, Canaan Fir

Accessories and Special Services: Christmas Shop, Santa Claus, Sleigh Rides, Marshmallow Roast/Campfire, Refreshments, Restrooms, Tree Baling, Balled & Burlapped, Tours by Appointment.

North Carolina
Has Won
The Honor
Of Providing
The White House
Christmas Tree
16 Times!



**Fan Us
or follow us!**



Visit Our Website To Link To Us
www.NCchristmastrees.com

H A Y W O O D

HAYWOOD COUNTY**BOYD MOUNTAIN CHRISTMAS TREE FARM****DAVID BOYD**

445 Boyd Farm Road
Waynesville, NC 28785
828-926-8888

Email: trees@boydmountain.com

Website: BoydMountainChristmasTreeFarm.com

Directions: FROM ASHEVILLE, NC OR KNOXVILLE, TN: Take Exit 20 off I-40. Go 3.5 miles on Hwy 276 South. Turn right onto Hemphill Road, cross bridge and immediately turn left onto Boyd Farm Road. Follow to Log Cabins.

Operating Dates and Hours: Open November 20-23, 25-30, December 2-7, 9-14: 9am-5pm, open Thanksgiving Day

Tree Species and Height: Fraser Fir, 4-15 feet

Accessories and Special Services: Santa Claus, Christmas Shop, Refreshments/Food Truck, Restrooms, Tree Baling, Wreaths, Garland, Boughs

Other Services: Two weekends with Santa Claus: November 22-23, 28-30

See our ad below.



In The Smoky Mountains



Easy to get to... hard to forget.

Experience an unforgettable Winter Vacation. Create memories with family by staying in one of our seven log cabins and selecting your own Christmas tree on over 130 beautifully landscaped acres.

- Fireplaces
- Skiing Close By
- Sledding on Property

Boyd Mountain Log Cabins Christmas Tree Farm

DUTCH COVE CHRISTMAS TREE FARM

MICHAEL MEDFORD



280 Setzer Drive
Canton, NC 28716
828-400-0806 or 828-550-4638
Email: dctreefarm@aol.com

Directions: Take I-40 exit 31 (Canton). Follow 215 South, across Pigeon River approx. 2.5 miles to junction with 19/23. Turn left at light (19/23N and 215S). Drive straight through 4 lights; then turn right at 5th light (Academy Street). Follow Academy Street to city limits (.7 miles). Road becomes Dutch Cove Road. Follow 4 miles, then turn left on Elbert Burnette Road. After .3 miles turn left on Setzer Drive. Tree farm is on the right.

Operating Dates and Hours: *Pre-tagging available beginning November 1: We expect to sell out pre-tagging; call for availability!*

Tree Species and Height: Fraser Fir Tabletops-8 feet

Accessories and Special Services: Tree Baling, Unsheared Trees, Wreaths, Boughs, Pre-Tagging of Trees begins November 1

MEHAFFEY TREE FARM

WALTER W. MEHAFFEY, JR.

24 Corner Drive
Waynesville, NC 28785
828-476-8505

Email: mmehaffe@gmail.com

Website: MehaffeyTreeFarm.com

Directions: From Interstate 40, take Exit 20 onto 276 South, Follow 276 South for 3 miles then turn right onto Grindstone Road. Follow Grindstone Road until it ends. Turn right onto Hemphill Road. Farm is .2 miles ahead on the left and is visible once you turn onto Hemphill Road.

Operating Dates and Hours: Open November 15-16, 20-23, 27-30, December 4-7, 11-14 or until sold out: 9am-5pm. Check out our website or Facebook for updates.

Tree Species and Height: Fraser Fir 5-12 feet

Accessories and Special Services: Refreshments, Restrooms, Tree Baling, Machine-Shaking

Other Services: All trees are easily accessible to the young and the young at heart. We are a pet-friendly farm. Dogs on leashes are welcome.



DID YOU KNOW...

The North Carolina Christmas Tree Association has been Keeping Christmas "Real" since 1959!

H A Y W O O D

SMOKY MOUNTAIN CHRISTMAS TREE FARM

ROBBIE HUNT



756 Hemphill Road
Waynesville, NC 28785
828-400-2933

Email: r115angel@aol.com

Website: SmokyMountainChristmasTreeFarm.com

Directions: From I-40: Take Exit 20/Maggie Valley, head south on Hwy 276. After 3 miles, turn right on Hemphill Road. We are .75 miles on right on top of knoll—big red barn on top of knoll OR CALL 828-400-2933

Operating Dates and Hours: Open weekends beginning November 20 until sold out: 10am-4pm Monday-Thursday, 9am-5pm Friday-Sunday. Call ahead during the weekdays.

Tree Species and Height: Fraser Fir 5-14 feet (great selection of 10-13 feet)

Accessories and Special Services: Restrooms, Wreaths, Tree Baling, Unsheared Trees

B&C WINERY

2427 SOCO RD
MAGGIE VALLEY, NC
828-550-3610
T-SAT 11-5 | SUN 1-4

WWW.BCWINERYNC.COM

HAYWOOD PLACES TO STAY

BOYD MOUNTAIN LOG CABINS AND CHRISTMAS TREE FARM

445 Boyd Farm Road
Waynesville, NC 28785
828-926-1575 or 828-926-8888
www.boydmountain.com
See our ad on page 28.

HAYWOOD THINGS TO DO

B&C WINERY

2427 Soco Road
Maggie Valley, NC 28751
828-550-3610
www.bcwinerync.com
See our ad above.

DID YOU KNOW...

*It takes as long as twelve years to grow
a Fraser Fir tree to an average retail height of 6-7 feet.*

JACKSON COUNTY

BEAR VALLEY FARM / STEVE PAGE

CONTACT: JERRY MCABEE

231 Bee Tree Road

Glenville, NC 28736

828-736-1405 or 828-212-9797

Email: info@bearvalleyfarm.com

Website: BearValleyFarm.com

Directions: Located right off Hwy NC 107N at 231 Bee Tree Road. Look for the red caboose!

Operating Dates and Hours: Open Saturday before Thanksgiving until sold out: Monday-Sunday 9am-5pm

Tree Species and Height: Fraser Fir 4-9 feet

Accessories and Special Services: Hayrides, Christmas Shop, Marshmallow Roast, Refreshments, Restrooms, Wreaths, Boughs, Tree Baling, Unsheared Trees, Tours by Appointment, Pre-Tagging of Trees begins November 15

Other Services: Wedding sites available. Friendly service and a pet-friendly atmosphere.

See our ad on next page.



CHIMNEY POND FARM / JARED BIRD

240 Chimney Pond Road

Glenville, NC 28736

704-831-9620

Email: jared@chimneypondfarm.com

Website: chimneypondfarm.com

Directions: 7 miles from Cashiers on 107 N, 17 miles from Highlands via US-64E to NC 107 N, or 20 miles from Sylva on 107 S. Take Lakeside Circle Drive off of 107 in Glenville onto Chimney Pond Road.

Operating Dates and Hours: Open November 28-30: 9am-4pm

Tree Species and Height: Fraser Fir 3-20 feet

Accessories and Special Services: Christmas Shop, Santa Claus, Hayrides, Marshmallow Roast/Campfire, Live Animals, Refreshments, Restrooms, Tree Baling, Balled & Burlapped, Wreaths, Garland

Other Services: 80 acre wedding venue set amongst rolling hills, blueberry bushes, rhododendrens and grape vines.



DID YOU KNOW...

North Carolina produces 22% of all real Christmas trees grown in the United States.



CHOOSE AND CUT CHRISTMAS TREES!

**Cider, Hot Chocolate, Mini Donkeys
Tractor Rides, Big Cinnamon Rolls!**



Bear Valley Farm is nestled in the Great Smoky Mountains of western North Carolina.

Here, crystal clear springs, crisp mountain air and rich soil help us grow the finest Fraser Firs.

WWW.BEARVALLEYFARM.COM

(828) 212.9797

231 BEE TREE ROAD

GLENVILLE, N.C. 28736

PRESSLEY TREE FARM LLC
SCOTY PRESSLEY

2770 Sherley Pressley Road
 Glenville, NC 28736
 828-399-1505

Email: scottpressley1946@gmail.com

Directions: At junction of Bee Tree Road & 107 in Glenville: Turn right in .5 miles onto Cedar Creek Road. In 2 miles, turn left onto Shirley Pressley Road. Travel .5 miles to farm road on right. There will be signs from Highway 107 to our farm.

Operating Dates and Hours: Friday, Saturday and Sunday of Thanksgiving weekend 10am-4pm. The weekend after by appointment.

Tree Species and Height: Fraser Fir 5-12 feet

Accessories and Special Services: Refreshments, Restrooms, Tree Baling, Machine-Shaking

Other Services: Tree drilling, stands available, large protective shelter



WHY

North Carolina Fraser Fir?



- ▲ Agricultural Crop Grown in and Native to Western North Carolina Mountains
- ▲ Soft, Pleasant-to-touch, Dark Green Needles
- ▲ Incomparable Needle Retention
- ▲ Long Lasting Traditional Christmas Aroma

- ▲ Pliable, Yet Strong, Branches for the Heaviest of Ornaments
- ▲ Environmentally Friendly, Recyclable after Christmas
- ▲ 16 Times Voted National Grand Champion Christmas Tree and displayed in the White House



Visit www.NCchristmastrees.com

L I N C O L N

LINCOLN COUNTY**HELMS CHRISTMAS TREE FARM****HENRY HELMS**

6345 Christmas Tree Lane

Vale, NC 28168

704-276-1835 or 980-241-7736

Email: henryhelms6345@gmail.comWebsite: facebook.com/HelmsChristmasTreeFarm/

Directions: From Lincoln County Courthouse: Take Hwy 27 West for 8 miles. At stoplight, turn right on Cat Square Road. Go 2 miles; turn left on Beam Lumber Road. Go .4 miles; turn right on John Beam Road. Go .3 miles and turn left on Christmas Tree Lane.

Operating Dates and Hours: November 22-December 22 or until sold out:
Wednesday-Sunday: 9am-6:00pm. Others by appointment.

Tree Species and Height: Blue Spruce, Fraser Fir precut, Green Giant, Leyland Cypress, Red Cedar, Virginia Pine, White Pine: All species 5-15 feet

Accessories and Special Services: Christmas Shop, Covered Wagon Rides & Kids' Train Rides, Marshmallow Roast/Campfire, Refreshments, Restrooms, Tree Baling, Machine-Shaking, Wreaths, Garland, Tours by Appointment (Call 980-241-7736), Pre-Tagging of Trees available starting October 1

Other Services: We also host school groups, parties and weddings throughout the year! Photo Ops are available October-December. Make your reservations early: 980-241-7736



1506 John Beam Rd • Vale, NC 28168
Across the road from Helms Tree Farm

Christmas Wine

THE PERFECT GIFT!

Tastings & Winery Hours:

Tuesday-Saturday 10am-5pm • Sunday 1-5pm

704-276-9911 | www.woodmillwinery.com

**SCUPPERNONG, MUSCADINE, BLACKBERRY, BLUEBERRY
& BLENDS FROM SOUTHERN SWEETS TO DELIGHTFUL DRIES**

DID YOU KNOW...

Christmas tree farms are excellent habitats for diverse wildlife including pollinators like bees and butterflies, birds, deer, turkey, rabbits, and beneficial insects.

LINCOLN THINGS TO DO**SAINÉ "ACE" HARDWARE
& GARDEN CENTER**

127 Spake Road
Lincolnton, NC 28092
704-735-3911
See our ad below.

LINCOLN THINGS TO DO**WOODMILL WINERY INC.**

1350 Woodmill Winery Lane
Vale, NC 28168
704-276-9911
www.woodmillwinery.com
See our ad on page 34.

ACE
The helpful place.®

**SAINÉ
HARDWARE
& GARDEN CENTER**
704-735-3911

127 SPAKE ROAD • LINCOLNTON, NC 28092

START A FAMILY TRADITION



Visit www.NCchristmastrees.com

MADISON

MADISON COUNTY**FROSTY MOUNTAIN CHRISTMAS TREES
DONNA & CHIPPER JONES**

13623 Hwy 212
Marshall, NC 28753
828-656-8100
Fax: 828-656-2548

Email: frostymountainchristmastrees@gmail.com

Website: FrostyMountainChristmasTrees.com

Directions: See website for details. **From Asheville or Johnson City, TN:** From TN take exit 50. Follow signs to Flag Pond; two miles past turn left onto Hwy 352. At the 4th mile, enter NC for 1/2 mile to turn in on the left. **From Cherokee:** Take TN-70 to NC line; road becomes 208 to the bottom of the mountain. Go straight on Hwy 212 for 13 miles.

Operating Dates and Hours: CLOSED FOR 2025. Please check back next year!

Tree Species and Height: Fraser Fir Tabletops-10 feet

Accessories and Special Services: Restrooms, Wreaths, Garland, Tree Baling, Tours by Appointment, Pre-Tagging of Trees July 1

Other Services: No frills, just trees and views!



START A FAMILY TRADITION

MITCHELL COUNTY**SNOW CREEK CHRISTMAS TREES / JOHN WILSON**

CONTACT: CHELSEA THAYER

447 Wilson Road

Bakersville, NC 28705

828-385-2388

Email: chelseawthayer@gmail.comWebsite: [facebook.com/snow-creek-christmas-trees](https://www.facebook.com/snow-creek-christmas-trees)

Directions: Just 1 mile off Hwy 226 between Spruce Pine and Bakersville on Wilson Road.

Operating Dates and Hours: November 22 (10am-5pm), November 23 (1pm-5pm), November 28 (10am-5pm), November 29 (10am-5pm)

Tree Species and Height: Fraser Fir 5-10 feet, Turkish Fir 7-12 feet

Accessories and Special Services: Hayrides, Refreshments, Restrooms, Wreaths

Other Services: Baling, tying and loading of trees for customers!

**MITCHELL PLACES TO EAT****WESTERN SIZZLIN RESTAURANT**11961 S Highway 226
Spruce Pine, NC 28777
828-765-9151
See our ad below.**ALL YOU CAN EAT
LUNCH & DINNER BUFFET**ALL MAJOR CREDIT CARDS ACCEPTED
TO-GO MENUS AVAILABLE

Spruce Pine, NC • 828-765-9151

Across from Grassy Creek Golf Course

DID YOU KNOW...*Every acre of Christmas trees grown produces the daily oxygen requirement for 18 people.*

RANDOLPH COUNTY

SPILLMAN'S CHRISTMAS TREE FARM

DARRELL & BEVERLY SPILLMAN

1576 Will Coltrane Road

Sophia, NC 27350

336-495-1090

Email: spillmanschristmastrees@gmail.com

Website: SpillmansChristmasTrees.com

Directions: Take 74 to 311 South to Branson Davis Road. Turn onto Will Coltrane Road, we are on the left.

Operating Dates and Hours: Open the day after Thanksgiving (November 29) through December 22: Monday-Thursday 1pm-8pm, Friday-Saturday 10am-8pm & Sunday 1pm-6pm

Tree Species and Height: Carolina Sapphire, Fraser Fir precut 4-10 feet, Green Giant, Leyland Cypress, Red Cedar

Accessories and Special Services: Hayrides, Refreshments, Restrooms, Handmade 8-14" Wreaths (24" preordered), Garland, Tree Baling, Machine-Shaking, Tours and Field Trips by Appointment Only

Other Services: Field trips are by appointment only; call ahead to get your classroom in. We will have hot cider and coffee ready for you to enjoy your time here on the farm. We will put netting on your tree and tie it to your car.



NORTH CAROLINA FRASER FIR
The Perfect Christmas Tree

Agricultural Crop Grown in and Native to Western North Carolina Mountains

- Soft, Pleasant-to-touch, Dark Green Needles
- Incomparable Needle Retention
- Long Lasting Traditional Christmas Aroma
- Pliable, Yet Strong, Branches for the Heaviest of Ornaments
- Environmentally Friendly, Recyclable after Christmas
- 14 Times Voted National Grand Champion Christmas Tree and displayed in the White House

WATAUGA COUNTY**APPALACHIAN CHRISTMAS MOUNTAIN FARMS****JESSIE DAVIS, RUSTY ESTES,
MATTHEW HORNEY, CALE SMITH**

7177 US-421

Boone, NC 28607

336-982-7081

Email: acmountainfarms@gmail.comWebsite: ACMountainFarms.com

Directions: From Boone: Take US-421S approximately 7 miles. Turn left into the farm; there is a left turn lane and break in the median. **From Wilkesboro:** Take 421N towards Boone. Travel approximately 4.5 miles past the Blue Ridge Parkway interchange and the farm is on your right.

Operating Dates and Hours: November 22-23, 28-30, December 6-7 or until sold out: 9am-5pm

Tree Species and Height: Fraser Fir Tabletops-10 feet

Accessories and Special Services: Santa Claus, Christmas Shop, Hayrides, Refreshments, Restrooms, Tree Baling, Wreaths & Garland

Other Services: We have hayrides out to our trees and we will cut/bale/load onto your vehicle. Plenty of Parking. Fun for the whole family! Beautiful views! See our ad on page 45.

**The Perfect Christmas Tree...****SELECTING**

- Determine where in your home you will display your tree. This will help you on determining the height of your tree and if all four sides must be suitable for display.
- Measure and measure again. Don't forget to allow room for the treetop decoration! Also, Keep in mind that trees look smaller when they are outdoors, so be sure to measure the tree that you choose before bringing it home.
- Choose a stand that is sturdy and holds AT LEAST 1 gallon of water.
- The tree should have a good fragrant aroma and dark, green color.
- Take a tarp or an old blanket to wrap the tree in and rope to secure it to the top of your car.
- It is best to store your tree outside, in a cool place protected from the sun until you are ready to set up and decorate the tree. Be sure that the base of the trunk is submerged in water until you are ready to bring it inside.

WATAUGA

**APPALACHIAN EVERGREENS, INC.
CHARLES C. & MELANIE WILCOX**

390 Castle Ford Road

Boone, NC 28607

828-264-1609

Email: info@appevergreens.comWebsite: AppEvergreens.com

Directions: From Boone: At the intersection of US-421/E King St. and NC-194 N (At New Market Shopping Center), turn onto 194 N and in about 3 miles turn slight right onto Castle Ford Road. The farm is on your right in about a quarter mile.

Operating Dates and Hours: November 15-16, 22-23, 28-30, December 6-7, 7-8, while supplies last: 9am-4pm

Tree Species and Height: Fraser Fir 5-8 feet; limited quantities over 8 feet

Accessories and Special Services: Refreshments, Restrooms, Tree Baling, Wreath & Garland (Mail Order Wreaths available: order by December 5)

See our ad on inside back cover.




START A HOLIDAY TRADITION
WITH

 **FOSCOE
RENTALS**

Enjoy the crisp mountain air
while you choose and cut your
Christmas Tree!

Foscoe Rentals offers condos,
cabins, and vacation homes.
Pets are welcome!



FoscoeRentals.com
800.723.7341 | 828.963.8142

Visit www.NCchristmastrees.com

BEAR WALLOW CHOOSE & CUT / CHAD HENSON

406 Long Ridge Farms Road

Sugar Grove, NC 28679

828-297-4373

Email: longridgetrees@gmail.com

Directions: From Boone: Take Hwy 105 South to the stoplight at Valle Crucis turnoff. Turn right onto Broadstone Road. Go past Mast General Store, turn left onto Watauga River Road. Go 1.9 miles and turn left onto Tom Ward Road. Take first left onto Long Ridge Farms Road and follow signs.

Operating Dates and Hours: November 22-23, 28-30, December 6-7, while supplies last: 10am-4pm

Tree Species and Height: Fraser Fir 4-14 feet

Accessories and Special Services: Restrooms, Tree Baling, Wreaths & Garland



FOLLOW US
ON OUR
SOCIAL
NETWORKS



Visit Our Website To Link To Us:

North Carolina Christmas Tree Association
www.NCchristmastrees.com

Visit www.NCchristmastrees.com

C and J CHRISTMAS TREES, BOONE***THE BROWN FAMILY****1999 Brookshire Road****Boone, NC 28607****828-264-6694****Email: dsbrown116@gmail.com****Website: CandJChristmasTrees.com**

Directions: To 1999 Brookshire Rd: On Hwy 421 at New River Bridge, turn at the C&J Christmas Tree sign. Follow the road .2 miles and turn right onto Brookshire Road at the C&J sign. Follow Brookshire Road 2.5 miles and turn left at the C&J sign. Follow road to the top of the mountain.

Operating Dates and Hours: November 17-21 (10am-4pm), 22-23 (9am-4pm), 24-25 (10am-4pm), 26th (9am-4pm), 27th (9am-1pm), 28-30 (9am-4pm), December 1-5 (10am-4pm), 6-7 (9am-4pm), 8-12 (10a-4pm). Additional dates to be announced.

Tree Species and Height: Fraser Fir Tabletop-11 feet

Accessories and Special Services: Santa, Refreshments, Restrooms, Wreaths, Tree Baling

Other Services: Beautiful Views! Credit cards are accepted except for Amex. Pets are allowed on leashes. C and J hats, toboggans, t-shirts and sweatshirts for sale. We will also have a pumpkin stand & Christmas tree market located at 1011 Hwy 194N, Boone, 28607: Fridays 3-6pm, Saturdays 10-6pm and Sundays 2-6pm. Please see Facebook for Santa & Mrs. Claus, face painting and pop-up vendor schedules. Photographers please call or text 843-833-0156 to schedule a session.

Other Seasonal Services: Pumpkin Patch & Corn Mazes located at 3490 NC Highway 194 N, Boone, NC 28607. Pumpkin Patch open October 3rd. Corn Mazes open October 4th, Haunted Corn Maze open after dark on Fridays & Saturdays. Open Fridays 5pm-10pm, Saturdays 11am-10pm and Sundays 1pm-6pm. We have mums, pumpkins, food and drinks for sale and there will be inflatable castles, corn hole, and fire barrels after dark. Call or text 843-833-0156.

**See our other location on page 9.*

DID YOU KNOW...

Discover the environmental benefits of real vs. artificial Christmas Trees at www.NCchristmastrees.com

**Questions about caring for your tree?
Click to www.NCchristmastrees.com**

CIRCLE C TREE FARMS / DENNIS COOK & JIM HENSON

CONTACT: ANGELA WILSON



372 Will Cook Road

PO Box 2507

Boone, NC 28607

828-265-7504

Email: circlectrees@gmail.comWebsite: CircleCTreeFarms.com

Directions: From Boone: Take Hwy 421 S to stoplight at Bamboo Road and turn right. Go exactly one mile and turn left onto Will Cook Road. Go to end of road. **From Blowing Rock:** Take Hwy 321 toward Boone and turn right at stoplight onto Deerfield Road. Go one mile and turn left onto Wilson Ridge Road. Go one mile to end. Go across Bamboo Road and bear right onto Will Cook Road. Go to end of road.

Operating Dates and Hours: November 15-16, 21-30, December 6-7:
9am-4:15pm

Tree Species and Height: Fraser Fir 4-14 feet

Accessories and Special Services: Restrooms, Tree Baling, Wreaths, Garland
Other Services: We offer a precut section of trees. Our barn is available to rent for special events January-October!

Experience peace and tranquility in a beautiful mountain setting near Boone North Carolina

A little slice of
heaven
conveniently
located
between Boone,
Watauga Lake,
Mountain City,
and Valle Crucis

Cornett Deal
Christmas Tree Farm
& Vacation Rentals
Call: 828-964-6322



Songbird Cabin
vrbo.com/1620698



2 NEW TINY HOUSES AVAILABLE FOR 2025!

Carolina Chickadee Cottage

airbnb.com/1/6SwZfn2M

Fraser Fir Finch Cottage

airbnb.com/1/wIsS0t9v

WATAUGA

CLAWSON'S CHOOSE & CUT**JOEY CLAWSON**

4944 Highway 194 North

Boone, NC 28607

828-719-6395

Email: panoramictreefarm@yahoo.com

Directions: From Hwy 421 take Hwy 194 North at New Market Shopping Center. Travel 4.6 miles to field and sign on the left.

Operating Dates and Hours: November 15-December 14: Open every day 9am-5pm, Open Thanksgiving Day!

Tree Species and Height: Fraser Fir Tabletops-10 feet

Accessories and Special Services: Hayrides, Live Animals to Pet and Feed, Refreshments, Restrooms, Wreaths, Garland, Boughs, Tree Baling

Other Services: Visit Santa's Homestead and see wreaths being made. Pets welcome. We accept credit cards, personal checks and cash. We have convenient hours on weekdays as well as weekends!



PRESENT THIS AD FOR

10% Off

Lunch or Dinner. Not valid with other offers.

Serving the High Country since 1975

Shadowline Drive • Boone, NC • 828-262-1250 • Peppers-Restaurant.com



**Dan'l Boone Inn
Restaurant**

**Serving Family Style
For Over 50 Years**

130 Hardin Street
Boone, NC • 828-264-8657
www.DanlBooneInn.com

Visit www.NCchristmastrees.com

GOOD SHEPHERD TREES**WILLIAM DAVIS**

2155 Blackberry Road

Boone, NC 28607

704-607-2300 Call or Text

Website: goodshepherdtrees.com**Directions: From Boone:** Hwy 321 to Blue Ridge Pkwy N for 3.7 miles.

Turn left onto Aho Rd for .6 miles and then left on Blackberry Rd for 2 miles.

From Charlotte/Hickory/Lenoir: Hwy 321 north, turn right onto Blackberry Rd at St. Mark's church and approximately 3 miles before you get to Blowing Rock. Travel 3.5 miles and farm is on the right.**Operating Dates and Hours:** November 28-30, December 6-7: 10am-4pm.*Please note: check Google Maps or call ahead for possible schedule changes due to weather and staffing.***Tree Species and Height:** Fraser Fir 5-9 feet**Accessories and Special Services:** Refreshments, Restrooms, Wreaths, Tree Netting, Christmas Tree Stands**OPEN WEEKENDS ONLY BEGINNING NOVEMBER 22**

Appalachian Christmas Mountain Farms is a local choose n' cut tree farm in Boone, North Carolina. We have always strived to produce the finest quality Fraser fir Christmas trees. AMCF looks forward to meeting new friends and seeing familiar faces!

**CONVENIENT LOCATION
JUST OFF HWY 421**

PLENTY OF PARKING

HAYRIDES!

7177 US-421, Boone, NC • 336-982-7081 • ACMountainFarms.com

Visit www.NCchristmastrees.com



*Minutes Away From
North Carolina's Best Tree Farms*



Boutique Lodging & Events

Downtown Blowing Rock, NC



PANORAMIC VIEW CHRISTMAS TREE FARM
JOEY CLAWSON



368 Panoramic Lane
 Boone, NC 28607
 828-719-6395

Email: panoramictreefarm@yahoo.com

Website: PanoramicTreeFarm.com

Directions: From Boone: At the intersection of Hwy 421 and Hwy 194 N at New Market center, take 194 N 5 miles. Turn right on Big Hill Rd, Go 1/2 mi and turn right on Panoramic lane. We are 200 yds on the right.

Operating Dates and Hours: November 22-23, 28-30, December 6-7:
 9am-5pm

Tree Species and Height: Fraser Fir, Tabletops-10 feet

Accessories and Special Services: Hayrides, Live Animals to Feed and Pet, Refreshments, Restrooms, Tree Baling, Wreaths, Garland, Boughs

Other Services: Pets welcome. We accept credit cards, personal checks, and cash.

WATAUGA PLACES TO STAY

FOSCOE RENTALS

133 Echota Parkway
 Boone, NC 28607
 800-723-7341 or 828-963-8142
www.foscoerentals.com
 See our ad on page 40.

MEADOWBROOK INN

Downtown Blowing Rock, NC 28605
 703-951-3122
www.stayinblowingrock.com
 See our ad on page 46.

CORNETT DEAL VACATION RENTALS

142 Tannenbaum Lane
 Vilas, NC 28692
 828-964-6322
www.CDtreefarm.com
 See our ad on page 43.

WATAUGA PLACES TO EAT

DAN'L BOONE INN RESTAURANT

130 Hardin Street
 Boone, NC 28607
 828-264-8657
www.danlbooneinn.com
 See our ad on page 44.

PEPPER'S

240 Shadowline Drive
 Boone, NC 28607
 828-262-1250
www.peppers-restaurant.com
 See our ad on page 44.



YANCEY

YANCEY COUNTY**YEATER'S CHRISTMAS TREES / DAVID YEATER**

489 River Walk Drive
Burnsville, NC 28714
828-674-3884



Email: dsyeater@gmail.com

Directions: Located between Burnsville and Spruce Pine, just off Hwy 19 at 489 Riverwalk Drive, Burnsville, NC 28714

Operating Dates and Hours: November 15-until sold out: Fridays & Saturdays 9am-5pm. Call ahead! No Sunday sales; Monday-Thursday call for appointment.

Tree Species and Height: Fraser Fir 6-9 feet

Accessories and Special Services: Refreshments, Restrooms, Wreaths, Tree Baling, Tree Drilling, Pre-Tagging of Trees starting September 1

Other Services: Free ornament making for kids!

***Goodness Grows In North Carolina...***

The Goodness Grows in North Carolina program is the official promotional program of the North Carolina Department of Agriculture and Consumer Services. The program was originally conceived as a broad-based way to promote top quality NC agricultural products. Beginning in 1998, some changes have been made to tailor part of the program to the Christmas Tree and Nursery Industries.

Membership in the program is free to all qualified producers of North Carolina agricultural products. Qualifications for Christmas Tree Growers and Nurseries include:

- 1) Production facilities or corporate headquarters must be located in North Carolina.
- 2) Facilities and or products must meet all Federal and State regulations where applicable.
- 3) The Goodness Grows logo can only be used on plants that are:
 - a) Grown in North Carolina
 - b) Meet or exceed the USDA standard for # 2 Christmas trees (for cut trees)
 - c) Meet or exceed the American Standard for Nursery Stock as published by the ANLA.

The Goodness Grows in North Carolina program is not intended as a substitute for any of the programs of the NCCTA. The NCDA & CS encourages you to continue your support of the North Carolina Christmas Tree Association and the outstanding work the association does for the North Carolina Christmas Tree Industry.

The Goodness Grows in North Carolina symbol is registered with the Secretary of State, and its use is regulated solely by the North Carolina Department of Agriculture and Consumer Services.

Visit www.NCchristmastrees.com

JOHNSON COUNTY, TN

WINTERGREEN FARM

SIMON SMITH

223 Waddell Road

Mountain City, TN 37683

Email: wintergreenfarm@gmail.com

Directions: From Boone, NC: Take 421 to Mountain City, TN; then 91 North towards Damascus, VA. Look for signs; turn right on Ackerson Creek Road. Go 1.2 miles; turn left on Waddell Road and take first gravel drive up to the left.

From Bristol: Take I-81 North to exit 19 (Damascus/Abingdon, VA); go right and follow 58 through Damascus, VA. Road turns to the right and becomes 91 South. Follow 91 through Laurel Bloomery, TN. Look for signs; turn left on Ackerson Creek Road. Go 1.2 miles and turn left on Waddell Road and take the first gravel drive to the left.

Operating Dates and Hours: November 27-December 22: 10am-5pm daily

Tree Species and Height: Fraser Fir, Canaan Fir and Nordmann Fir: 3-10+ feet

Accessories and Special Services: Restrooms, Un-sheared Trees, Machine-Shaking, Tree Baling, Wreaths

Other Services: Beautiful Views into 3 states!



START A
FAMILY
TRADITION



Choose & Cut Memories Photo Contest



SPONSORED BY

**Christmas Tree
Association**

Win A Seven Foot North Carolina Fraser Fir For Christmas 2026!

**FIRST PLACE PHOTO WILL BE FEATURED ON THE COVER
OF THE 2026 CHOOSE & CUT MEMORIES DIRECTORY
AND WINNER WILL RECEIVE A FREE CHRISTMAS TREE FOR 2026**

Take a photo that showcases your family and your tree. Show your family having fun in a natural rather than posed setting. Be sure to send the original full size color digital image. We encourage you to submit the photo through our online form by scanning the QR code. Only one entry per family is allowed, and the photo must be taken at one of the farms listed in this book. Photos will become the property of NCCTA and may be used in additional publications without further consent.


**ONLINE CONTEST
APPLICATION**

ONLINE CONTEST APPLICATION: www.NCchristmastrees.com/photocontest

MAIL-IN CONTEST APPLICATION

Contestant's Name: _____

Mailing Address: _____

City: _____ State: _____ Zip: _____

Email: _____ Phone: _____

Farm name _____

Name & relationship of person(s) in photo: _____

CONTEST DEADLINE: Photo must be submitted by January 31, 2026. Winners will be notified by phone or email.

IF MAILING, SEND PHOTO & APPLICATION TO: NCCTA, PO BOX 288, BOONE, NORTH CAROLINA 28607

2024 Photo Contest Winners



◀ RUNNER-UP

Photo Submitted by
April Wilkins-Little;
Pictured: David Little,
August Little, and
Cooper Little with their
friend, Nevaeh Grimsley;
Mistletoe Meadows,
Laurel Springs, NC

RUNNER-UP ▶

Photo Submitted by
Landon Hart;
Pictured: Sadie Rae Hart
and Sam Hart; Frosty's
Choose & Cut, West
Jefferson, NC



Visit www.NCchristmastrees.com

ADVERTISERS INDEX

Ace-Saine Hardware & Garden Center	35	Lil' Grandfather	6
Appalachian Christmas Mountain Farms.....	45	Meadowbrook Inn.....	46
Appalachian Evergreens	Inside Back Cover	Mistletoe Meadows.....	3
B&C Winery.....	30	Mountain Aire Seafood & Steaks.....	10
Bear Valley Farm	32	Mountain Glen Golf Club	21
Boyd Mountain Log Cabins & Christmas Tree Farm.....	28	Newland Christmas Tree Festival	22
Carolina BBQ.....	24	Old Barn Winery.....	1
Cartner's Christmas Tree Farm.....	16	Pepper's Restaurant	44
Cornett Deal Vacation Rentals.....	43	Puerto Nuevo Taqueria.....	19
Dan'l Boone Inn Restaurant.....	44	Quik Shop Newland	21
Foscoe Rentals.....	40	Snowy Mountain Christmas Tree Farm	Inside Front Cover
Frosty's Choose & Cut.....	Back Cover	Sugar Plum Farm.....	Inside Front Cover
Grandfather Mountain	23	The County of Avery NC.....	17
High Country Lights	8	The Inn at Shady Lawn	23
Lacey Realty Co.	18	The Lodge at Banner Elk	18
Lantern Farm	12	Third Day Market	Inside Back Cover
LifeStore Bank.....	13	Western Sizzlin	37
Lifestore Insurance	11	Woodmill Winery, Inc.....	34



START A FAMILY TRADITION



The *perfect* holiday gift.

North Carolina Fraser Fir Mail Order Christmas Wreaths

For your best customers, suppliers and associates! Great gift for friends and family too!
Ship anywhere within the Continental U.S.
A Gift Card is included indicating the gift is from you.



Order by Dec. 5th: www.appveergreens.com

The High Country's finest Choose & Cut farm



Spectacular long-range views, trees from 5-8 feet, with limited numbers of trees above 8 ft.
Hot chocolate & hot cider, plus a great selection of wreaths & garlands in all sizes. Visit our website at www.appveergreens.com to print directions to farm.

November 15-16, 22-23, 28-30
December 6-7
9 am - 4 pm

828.264.1609

390 Castle Ford Road, Boone, NC 28607
Mail Order: info@appveergreens.com

Appalachian
EVERGREENS
Christmas growery since 1933



CHRISTMAS SHOP



599 NC HWY 16 SOUTH, JEFFERSON NC

Unique Christmas ornaments, trees, garland, wreaths, indoor & outdoor lighting, ribbon, collectibles, gifts, home décor and much more!


THIRD DAY
MARKET

THIRD DAY MARKET
GARDEN, HOME AND GIFTS
336-846-1089
www.thirddaymarket.com



Frosty's
Choose & Cut

2025 OPENING DAY
NOV 21
OPEN ON BLACK FRI



VISIT SANTA



HAY RIDES



PET-FRIENDLY



TREE SOUVENIR



BUILD-A-WREATH



TROLLEY RIDES

2152 BEAVER CREEK SCH RD
WEST JEFFERSON

WWW.GOFROSTYS.COM